



Founded by the
University of Adelaide.

AUSTRALIAN ROVER CHALLENGE 2025

PARTICIPANT HANDBOOK



Date: Thursday 27 – Sunday 30 March 2025

Location: University of Adelaide's Roseworthy Campus, Roseworthy.



Founded by the
University of Adelaide.

AUSTRALIAN ROVER CHALLENGE 2025

Welcome to the fifth annual Australian Rover Challenge – ARCh 2025!

This year's ARCh will take place at the EXTERRES Analogue Facility, located at the University of Adelaide's Roseworthy Campus 50km north of the Adelaide CBD.

The EXTERRES Analogue Facility is a multi-purpose research and education facility that enables the development, testing and commercialisation of remotely operated and autonomous robotic technologies for a range of industries including the Space, Agriculture and Mining sectors.

The facility's 4,000m² customisable field provides scope for a range of activities including the operation of single and multiple rovers, payload testing for excavation, mining and construction and robotic vision and navigation. The site can also be used for investigations into human-robot teaming and remote operations.

Adjacent to the field, the EXTERRES Analogue Facility has a fully operational "Mission Control" that functions as both a field control centre and workshop. This acts as a localised operations hub for technology control and monitoring as well as allowing easy access to maintenance and development facilities.

EXTERRES Analogue Facility is linked to [EXTERRES Mission Control](#) located at North Terrace Campus.

More specific information about the University of Adelaide's Roseworthy campus can be found [here](#).

Please read this handbook completely and thoroughly to ensure you make the best of ARCh 2025 and remember – if you have a question, just ask!

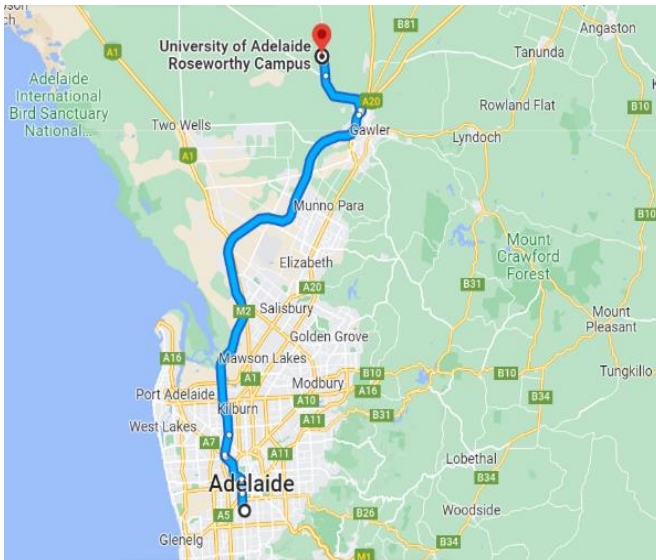




Founded by the
University of Adelaide.

AUSTRALIAN ROVER CHALLENGE 2025

Getting To Roseworthy Campus



The University of Adelaide's Roseworthy Campus is located approximately 50km north of Adelaide's Central Business District (CBD).

Address

Mudla Wirra Rd,
Roseworthy, SA 5371

Travelling by Car

Driving to Roseworthy from the Adelaide CBD takes approximately 45 to 60 minutes depending on the time of the day and traffic conditions.

From Gawler (the closest town to Roseworthy) the drive is approximately 15 to 25 minutes depending on the time of the day and traffic conditions.

Alternative Travel Options

Train to Gawler

A train service is available every 30 minutes from the Adelaide Railway Station to Gawler Central Railway Station (train service GAWC). This journey takes approximately an hour. The timetable can be found [here](#).

As Gawler is located 8km from Roseworthy you will need to arrange transfers from the train station to the campus. Please refer to Taxis/Uber/Didi section below.

Train fares can be purchased using the [Adelaide Metro Tap and Pay](#) onboard validators with a Visa or Mastercard (credit/debit card or an enabled smart phone or device).

For further information phone Adelaide Metro Infoline on 1300 311 108 or visit the Adelaide Railway Station, 125 North Terrace, Adelaide. Their offices are open 7am – 8pm every day or alternatively, please refer to [Adelaide Metro website](#).

Taxis/Uber/DiDi

It is possible to use taxis Uber, or DiDi to travel between Adelaide, Roseworthy, and Gawler.

To book a taxi to or from Gawler, call Gawler Taxis on (08) 8523 1366. At times the journey from Gawler to Roseworthy can take up to 25 minutes, depending on the time of day and/or traffic conditions. The Adelaide Taxi Service is likewise available for journeys starting or ending in Adelaide, and Uber and DiDi also operate throughout the area.

With all of these services, please be mindful that within the more rural areas, services are limited and can be especially hard to find when departing **from** Roseworthy.

Also be mindful and plan for the costs of these services, as they can be quite expensive over the distance between Adelaide and Roseworthy.



AUSTRALIAN
ROVER
CHALLENGE

Founded by the
University of Adelaide.

AUSTRALIAN ROVER CHALLENGE 2025

Event Site Map

Car Parking

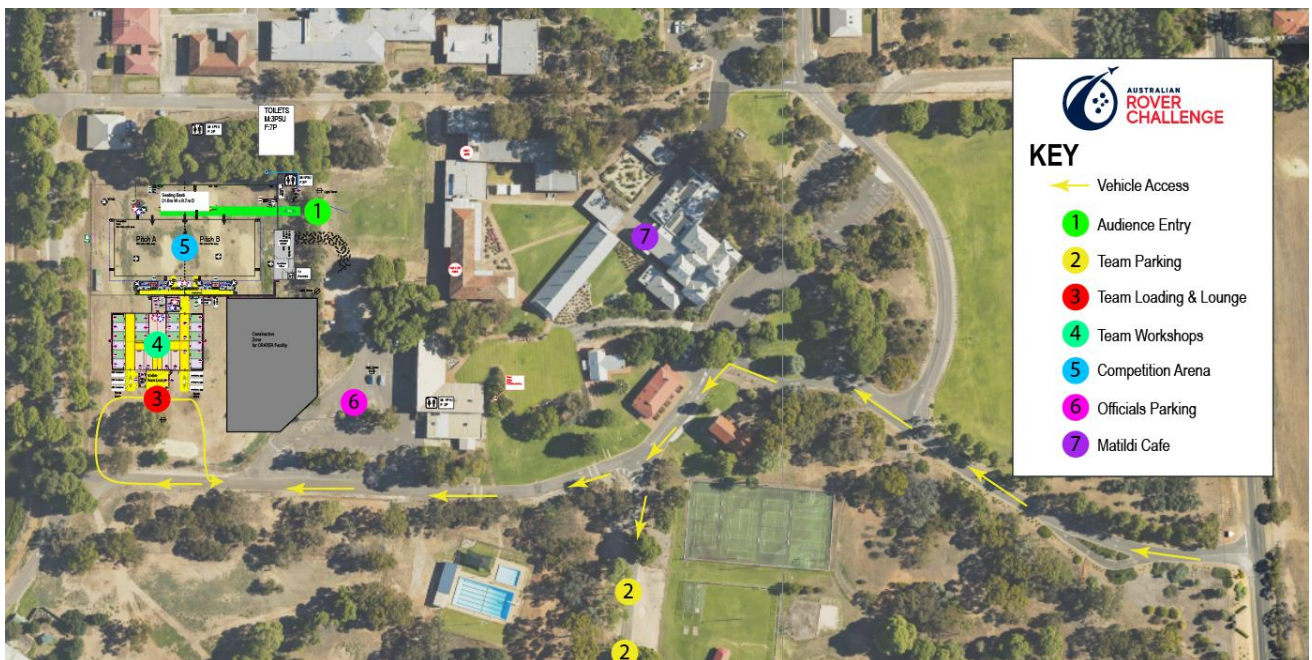
There is ample free parking on campus and spaces located within five minutes walking distance of the competition site. See Reference 2 on the map below for Team Parking where you can park anywhere with your trailers where there is a free space. To access, enter Roseworthy campus via the main entrance, off Mudla Wirra Road.

Team Loading Zone

Reference 3 on the map below is the location of the Team Loading Zone. This is a dedicated unloading/loading zone and is located close to the competition site.

Please note this is an unloading/loading zone only and not a parking area. All daily parking should be in the Team Parking area.

Site Map





Founded by the
University of Adelaide.

AUSTRALIAN ROVER CHALLENGE 2025

Australian Rover Challenge (ARCh) Competition Site

Arrival at Roseworthy

When you arrive at Roseworthy on your first day, please report to the Site Manager. The Site Manager will be located near the competition arena (Reference 3 on the site map).

The Site Manager will welcome you and provide:

- A site briefing
- Familiarisation
- And your team credentials

On completion of the above you will be asked to unload and settle into your workspaces.

Adequate unloading space is available near the competition arena (Reference 3 on the site map) and designated parking available (Reference 2 on the site map).

Mandatory Safety Briefing

Each team's Leadership group must undertake a mandatory safety and site overview briefing.

All team members are strictly prohibited from beginning any work until this briefing has been undertaken and disseminated.

This briefing will be presented at the bleachers prior to the team undertaking any work in their workshops. To enter the bleachers, refer to Reference 1 on the site map. Briefings are scheduled for 9am, 11am, and 1pm on Wednesday 26 March.

After the safety briefing, the team's leadership group are responsible for the safety of their wider team.

Site Access Times

The ARCh site will be open/operational at the times below:

Date	Primary activity	Open	Close
Tuesday 25 March	Drop off equipment	5:00pm	7:00pm
Wednesday 26 March	Prepare and practice	7:00am	9:45pm
Thursday 27 March	Post-Landing task & Space Resources task	7:00am	9:45pm
Friday 28 March	Post-Landing task & Space Resources task	7:00am	9:45pm
Saturday 29 March	Excavation and Construction task & Mapping and Autonomous task	7:00am	9:45pm
Sunday 30 March	Excavation and Construction task & Mapping and Autonomous task	7:00am	9:00pm
Monday 31 March	Collect equipment	10:00am	12:00pm



Founded by the
University of Adelaide.

AUSTRALIAN ROVER CHALLENGE 2025

Prior to the ARCh wrap-up event at 6:00pm on Sunday 30 March, teams are asked to completely pack up their workshop areas. Equipment can be bumped out on the same evening or alternatively can be placed in the storage shipping containers for collection on Monday 31 March.

Teams who place their equipment in storage containers on Sunday 30 March are asked to collect their equipment between 10am and 12pm on Monday 31 March.

No access will be available to the Challenge site or the workshop spaces outside of these hours. Security will be monitoring the Challenge site **outside of the open times**.

Competition Arena

There are two competition arenas – Pitch A and Pitch B (reference 5 on the site map). Each competition arena will consist of a flat surface (approximately 30m wide x 25m deep) covered by loose sand with large obstacles including hills, crater walls, rocks and challenge props.

Team members are not permitted to walk on the field at any time unless loading/unloading a rover during allocated task times or during allocated practice times, adhering to what is described in the Rules and Requirements document.

Team members are permitted to walk around the designated 2m perimeter, to observe the rover or take photos and video.

Practice & Preparation

Before the Competition – Wednesday 26th

The day before the competition starts, teams are allowed to book a 15-minute session with judges to verify their rover and its various configurations adhere to the specified requirements in Section 3 of the Rules & Requirements document (i.e. size, weight, E-Stop, Signal Light, radio communications, etc.). This will also allow teams to practice driving on the arena surface, or interact with any Task items, like the propellant hose connector.

This session will be the final chance to raise issues with judges. Any subsequent decisions by the judges throughout the competition are final.

Competition Days – 27th to 30th

During each competition day, after official Task times have concluded and no team is competing, 30-minute practice slots on the Competition Arenas will be available for booking. These bookings are made on a First-Come-First-Serve basis for that day, by visiting the Judging tent and writing down your Team Name and Time Preference on sheets of paper.

Teams can book up to 1 session, per day*. Teams may begin practice 30-minutes after the end of the final Task, until 30 minutes before the Challenge site closes (9:15pm for site closure at 9:45pm), so that teams can pack up their workshop space and lock valuables in designated containers.

When practicing on the pitch the following rules will be applied in order to; i) ensure safety of participants, ii) minimize damage to the props and arena surface, and iii) to return the surface to its original state in preparation for live streaming the following day. These rules are:

1. A maximum of 4 persons from each team are allowed on the arena at any one time, all other members must walk around the perimeter or watch from the seating stand next to the arena;



Founded by the
University of Adelaide.

AUSTRALIAN ROVER CHALLENGE 2025

2. After practice is complete the team must use the provided rakes to smooth/till the surface to return it to its original conditions; and,
3. No allocated 'competition' or 'practice' radiocommunication bands will be enforced or monitored – it is entirely the team's responsibility to manage themselves.

Failure to adhere to these rules will result in ejection from the arena, loss of allocated practice times, and possible point penalties depending on severity of impact to the arena or props.

** If a team is not ready or present for their practice slot, they may defer to another team. For example, if Team A is practicing from 5:30 to 6:00pm, and Team B has the slot from 6:00 to 6:30pm but is not ready, Team A can ask Team B for their slot and continue practicing. A team may practice for a maximum of 1.5 hours per day (either continuous or spread out). Teams are responsible for managing practice slots amongst themselves.*

Freezer Access

Teams may request to store samples of icy regolith for **Space Resources** task in the portable freezer for testing, however freezer space is at discretion of judges and may be limited. Team members are not permitted to enter the freezer at any time. Teams are fully responsible for bringing all materials to practice themselves. Judges will not provide sand, containers or pre-made samples to teams to practice on.

Team Lounge Area

Teams will have access to a lounge area (reference 3 on the site map) where you can access a microwave, sandwich press, kettle, tap and sink.

Industry Alley

Our sponsors and supporters are some of the biggest names in the industry. As an ARCh participant, you will have the chance to connect with our sponsors in the team lounge or in your workshop area. Take the time to speak with them during the 4-day challenge as they will be keen to hear you and your team's story. They will be wearing their company branded work wear.

Quiet Places

If you or your team needs a quiet space, you can make use of the public spaces at Maitidli Café and/or the Team Lounge (Reference 6 on the site map). You can also use the Roseworthy Campus Library during its opening hours. The Roseworthy Campus Library is in the Eastick Building. Refer to the [Roseworthy Campus Map](#) for directions.

Storage

Teams will have access to enclosed shipping containers for storage during the competition. Containers are situated at the southern end of workshop tents, adjacent to the team loading area (Reference 3 and 4 on the site map). Teams will have the ability to store the rover and other valuables overnight between the Challenge site close and open times. Each team will be allocated a space of approximately 2m x 2m within each container. The containers will be locked at all times. Only ARCh representatives will have access. To access your space within the container, you will find an ARCh representative who will be able to grant you access.

The containers will be strictly locked each night by a member of the technical team when the site closes at exactly 9:45pm.



Founded by the
University of Adelaide.

AUSTRALIAN ROVER CHALLENGE 2025

Any equipment not in the containers at this time will have to be left in teams' workshop tents, at their own risk. It is **expected** that teams plan to use the time between 9:15pm and 9:45pm (or even earlier!) to load their equipment into the containers. As covered above, team members will have to vacate the site at site closure immediately following the containers being locked, and this will be monitored and enforced by security.

Workshop Space

All teams will be provided with an 4m (width) x 6m (depth) allocated **Workshop Zone, illustrated on the site map**, where you may work on your rovers. Your Workshop Zone is not branded, and you are encouraged to bring signage to brand your space.

Fire Extinguishers

There are fire extinguishers at various locations throughout the tent. Your workshop zone is on grass. **Teams are responsible for all other fire suppression equipment which may be specific to their equipment.** Sand can be supplied as a material to smother thermal run-away batteries, if teams bring a bucket or other vessel to keep the sand in their workshop space.

Safe workspace use

Teams are responsible for ensuring the safety of their workshop zones. It is also expected that teams keep their zones relatively orderly, and free of rubbish. Bins will be provided, as outlined below. Zones must be completely cleared, clean, and left in the state they were found at the end of the competition.

Base Station

Facing opposite to the tiered seating bank, there will be four tents which will act Base Stations. These are named Base Station A1 & A2 and Base Station B1 & B2 (sometimes referred to as Mission Control A1, A2, B1 and B2). These tents will have limited access during the event days. They are only available to active teams participating in the challenges. These tents will have two (2) x 2.4m trestles, 5 bistro chairs and a 4-way power board connected to a 10A 240V power supply. **Teams are responsible for extension boards to accommodate their Base Station power needs.**

The tents are approximately 6m x 3m external dimensions. Due to density limits, a **maximum of 7 team members** will be permitted in the Base Station during the challenge tasks. Two monitors will be provided, each with a HDMI cable and splitter that you must connect your device to, in order to connect to the monitor, and to provide a live feed that event staff can show intermittently on the large LED Screen for viewing by the audience and live stream.

Access and Accreditation

Each participant will be issued accreditation to identify them as a participant. Entry to the team workshops, Base Station AREAS and rover testing area behind the tiered seating are for participants and staff only, and you must wear your credential to gain access.

Electricity

In your Workshop tent there will be 2 x 10A power supplies to utilise. Make sure you bring enough power cables and power boards for your set up. Ensure all power boards, cables and electrical equipment is tagged and tested and the tags are in date. Please note there will be no tagging and testing facilities available on site.



Founded by the
University of Adelaide.

AUSTRALIAN ROVER CHALLENGE 2025

Furniture

Each team will be supplied with 5 bistro chairs and two (2) x 2.4m trestle tables.

Bins and Waste Management

There will be a 3-bin recycling system in place, these will be clearly marked. Where possible, please ensure your team members use the correct bins, as every bit helps to bring us closer to hitting our targets for zero waste.



Founded by the
University of Adelaide.

AUSTRALIAN ROVER CHALLENGE 2025

Official Event Dates and Times

All official Challenge events will be held at the ARCh Roseworthy Competition site and are **compulsory** for teams to attend. Food is complementary at some events (listed in the 'Notes' column of the table below) and will be available to all attending team members.

Date	Function	Times	Location	Notes
Wednesday 26 March	Opening Ceremony	3:00pm – 4:10pm	Competition arena (access to bleachers, ref 1 on map)	Each team's rover will be positioned around the stage during formalities where your teams will be introduced.
	Networking session and trophy building	4:10pm – 5:00pm	Team workshop area (ref 4 on map)	Engage with officials, guests and sponsors whilst you continue to prepare for competition
	Boeing & Caterpillar presentation	5:15pm – 6:30pm	Competition arena (access to bleachers, ref 1 on map)	Hear from ARCh's Premier Sponsors Caterpillar, Boeing and EL02, followed by a complimentary meal and soft drinks.
Saturday 29 th March	Animals Anonymous roving animals	12:00pm – 3:00pm	Team workshop area (ref 4 on map)	Engage with some native Australian wildlife!
Sunday 30 th March	Award ceremony	4:10pm – 5:00pm	Competition arena (access to bleachers, ref 1 on map)	
	Teams Tug of War	5:00pm – 6:00pm	Competition arena (ref 5 on map)	After the competition, pit your rover against a rival and see who has the most torque!
	Finish celebration dinner	6:00pm – 7:30pm	Maitidli Café (ref 7 on map)	Unwind and celebrate with a complimentary meal at the Uni's Maitidli Café. Cash bar available.



Founded by the
University of Adelaide.

AUSTRALIAN ROVER CHALLENGE 2025

Trophy Building

Before the start of the Australian Rover Challenge, it is customary for all participating teams to gather and take part in a hands-on trophy building activity that embodies the Challenge's pillars of collaboration and community.

Not only is this a chance for teams to meet new (and old) friends, but it's a chance to connect over the shared experiences of highs and lows that pave the way to participating in the Australian Rover Challenge.

Symbolically, the trophies are made using the failed parts of each of your rovers. They represent the hurdles you have overcome and highlight how a podium finish at the Challenge is built upon a legacy of lessons learned. We hope all teams can come together and participate in this activity.

Each team is encouraged to bring along 2-3 components that have not only been a source of significant frustration but have also become the subject of light-hearted ridicule within the team (e.g., becoming the butt of jokes and banter). These parts could range from unsuccessful 3D prints to malfunctioning Arduinos, or even damaged antennas. We suggest you choose smaller items rather than larger ones, like bulky 3D printed wheels. Trestle tables, hot glue guns, and gold spray paint will be provided.

Collaboration

If your team is experiencing an issue during ARCh, please reach out to other teams or judges for assistance. Every year we are impressed by the team spirit participants bring to the competition, helping each other to overcome challenges and we are sure 2025's Challenge will be no different.

Likewise, if your team is contacted to help resolve an issue, please thoughtfully help the team who requested your help.

This collaborative atmosphere really sets our competition apart and is a unique characteristic that is integral to the Challenge.



Founded by the
University of Adelaide.

AUSTRALIAN ROVER CHALLENGE 2025

Competition Schedule

Please find the competition schedule below. The below times correspond to your **task time**.

Your task brief and weigh-in will begin 25 minutes before the start of the task time, and base station set-up will begin 15 minutes before the start of the task time. After the end of your task time, you will have 5 minutes to vacate the base station. Tasks which have a presentation (Space Resources, Mapping and Autonomous) will have their presentations in the base station beginning 10 minutes after the end of the task time.

Note: Task briefings and weigh-ins are not flexible. Arriving late to the judging tent for your brief and weigh-in will result in your attempt at that task being forfeited.

Thursday 27 March		
Post-Landing Task Presented by ELO2		
Space Resources Task Presented by iSpace		
Task	Start Time	Team
Pitch A Post Landing	9:00am – 9:40am	Monash Nova Rover
	9:45am – 10:25am	RMIT Rover Team
	10:30am – 11:10am	UWA Rover Team
	11:15am – 11:55am	AGH Space Systems
	12:00pm – 12:40pm	UOW Rover Team
	BREAK	
	2:30pm – 3:10pm	UQ Space
	3:15pm – 3:55pm	UTS Rover Team
Pitch B Space Resources	9:15am – 9:55am	Adelaide Rover Team
	10:00am – 10:40am	ROAR Team
	10:45am – 11:25am	UniMelb Rover Team
	11:30am – 12:10pm	UNSW Canberra RAS
	BREAK	
	2:00pm – 2:40pm	Legendary Rover Team
	2:45pm – 3:25pm	Project Scorpio
	3:30pm – 4:10pm	Deakin Competitive Rover

***Competition schedule is correct at time of distribution and is subject to change**



Founded by the
University of Adelaide.

AUSTRALIAN ROVER CHALLENGE 2025

Friday 28 March		
Post-Landing Task Presented by ELO2		
Space Resources Task Presented by iSpace		
Task	Start Time	Team
Pitch A Post Landing	9:00am – 9:40am	Project Scorpio
	9:45am – 10:25am	Bluesat
	10:30am – 11:10am	Deakin Competitive Rover
	11:15am – 11:55am	Adelaide Rover Team
	12:00pm – 12:40pm	ROAR Team
	BREAK	
	1:45pm – 2:25pm	UniMelb Rover Team
	2:30pm – 3:10pm	UNSW Canberra RAS
Pitch B Space Resources	3:15pm – 3:55pm	Legendary Rover Team
	9:15am – 9:55am	AGH Space Systems
	10:00am – 10:40am	UOW Rover Team
	10:45am – 11:25am	UQ Space
	11:30am – 12:10pm	UTS Rover Team
	BREAK	
	2:00pm – 2:40pm	Monash Nova Rover
	2:45pm – 3:25pm	RMIT Rover Team
3:30pm – 4:10pm	UWA Rover Team	

***Competition schedule is correct at time of distribution and is subject to change**



Founded by the
University of Adelaide.

AUSTRALIAN ROVER CHALLENGE 2025

<u>Saturday 29 March</u>		
Excavation and Construction Task Presented by Caterpillar		
Mapping and Autonomous Task Presented by Boeing		
Task	Start Time	Team
Pitch A Excavation & Construction	9:00am – 9:40am	UQ Space
	9:45am – 10:25am	UTS Rover Team
	10:30am – 11:10am	Monash Nova Rover
	11:15am – 11:55am	RMIT Rover Team
	12:00pm – 12:40pm	UNSW Canberra RAS
	BREAK	
	1:45pm – 2:25pm	AGH Space Systems
	2:30pm – 3:10pm	UOW Rover Team
Pitch B Mapping & Autonomous	9:15am – 9:55am	Project Scorpio
	10:00am – 10:40am	Adelaide Rover Team
	10:45am – 11:25am	ROAR Team
	11:30am – 12:10pm	UniMelb Rover Team
	BREAK	
	2:00pm – 2:40pm	Legendary Rover Team

***Competition schedule is correct at time of distribution and is subject to change**



Founded by the
University of Adelaide.

AUSTRALIAN ROVER CHALLENGE 2025

Sunday 30 March		
Excavation and Construction Task Presented by Caterpillar		
Mapping and Autonomous Task Presented by Boeing		
Task	Start Time	Team
Pitch A Excavation & Construction	9:00am – 9:40am	UniMelb Rover Team
	9:45am – 10:25am	Legendary Rover Team
	10:30am – 11:10am	Project Scorpio
	11:15am – 11:55am	Bluesat
	12:00pm – 12:40pm	Adelaide Rover Team
	BREAK	
	1:45pm – 2:25pm	ROAR Team
Pitch B Mapping & Autonomous	9:15am – 9:55am	Monash Nova Rover
	10:00am – 10:40am	AGH Space Systems
	10:45am – 11:25am	UOW Rover Team
	11:30am – 12:10pm	UQ Space
	BREAK	
	2:00pm – 2:40pm	UNSW Canberra RAS

***Competition schedule is correct at time of distribution and is subject to change**



Founded by the
University of Adelaide.

AUSTRALIAN ROVER CHALLENGE 2025

General Event Information

Safety

Strictly no alcohol is to be brought onto the competition site, and no team members may be affected by drugs or alcohol while on the competition site. Smoking and vaping are not permitted on the University campus.

Teams should be mindful of the potential stress and pressure that could be felt by members of their team during competition. It is important for all team members to be aware of contributing factors such as heat stress, dehydration and sleep deprivation and take steps to avoid their effects.

There will be medical support on site during competition hours.

Water

There are water fountains around the University. Please bring a refillable water bottle to keep hydrated.

SunSmart

Adelaide in March can be hot or cold and the sun can be particularly unforgiving. Please be sun smart and bring your sunscreen and remember to reapply. For the most up-to-date weather information, visit the Bureau of Meteorology [website](#).

Buying Food and Drinks

The Uni's Maitidli Café (see reference 7 on site map) will be open daily, Thursday to Sunday for refreshments, snacks and meals on a user-pays basis. Hot Lunch is available from 11:30am to 1:30pm daily.

We have a special arrangement with Maitidli Café where their kitchen will remain open for Teams to have Dinner on Thursday 27 & Friday 28 March (Challenge Days 1 and 2).

Dinner will be available strictly between 6:30pm – 7:00pm and **must be pre-ordered**. A limited number of evening meals will be available each day; these will be offered on a first-in basis and must be pre-ordered at the café by 2pm each day.

Opening Hours:

- Thursday & Friday 7:30am – 5:00pm
- Saturday & Sunday 10:30am – 3:30pm

Nearest Town

Gawler is located just under 10km away.

Murray Street, the main street of Gawler offers a range of cafes and shops. A [list of places to eat](#) (including fast-food outlets) is provided by the Gawler Visitor Information Centre, but we encourage you to contact the venues direct for the most up to date opening times.



Founded by the
University of Adelaide.

AUSTRALIAN ROVER CHALLENGE 2025

Supermarkets

Both Woolworths and Coles have large supermarkets in Gawler, and there is an Aldi in the Gawler suburb of Evanston.

- Woolworths, 2 Commercial Lane, Gawler T 8525 7002
- Coles, Gawler Central Shopping Centre, Murray Street, Gawler T 7506 7000
- Aldi, 1 Tulloch Rd, Evanston T 13 25 34

Nearby Hardware Supplies

Bunnings Warehouse is a major hardware chain and has two stores near Roseworthy Campus. Mitre 10 is another hardware store nearby.

Bunnings – Gawler

- Approximately 15km from campus
- ADDRESS: 6 Tulloch Rd, Evanston
- PHONE: 8523 8300
- [Website](#)
- Opening Times
 - Mon, Tues, Wed, Fri 6.30am to 7pm
 - Thursday 6.30am to 9pm
 - Saturday 7am to 5pm
 - Sunday 9am to 5pm

Bunnings – Munno Para West

- Approximately 19km from campus
- ADDRESS: Corner Frisby and, Curtis Rd, Smithfield Plains
- PHONE: 7285 7000
- [Website](#)
- Opening Times
 - Mon, Tues, Wed, Fri 6.30am to 7pm
 - Thursday 6.30am to 9pm
 - Saturday 7am to 5pm
 - Sunday 9am to 5pm

Mitre 10 – Gawler

- Approximately 12km away
- ADDRESS: 7 Adelaide Rd, Gawler South
- PHONE: 8522 1944
- [Website](#)
- Opening Times
 - Mon – Fri 7am to 6pm
 - Saturday 8am to 5pm
 - Sunday 9am to 5pm



Founded by the
University of Adelaide.

AUSTRALIAN ROVER CHALLENGE 2025

Wi-Fi Access

Please ensure you have logged on to Eduroam at your home university BEFORE arriving on the Roseworthy campus. For international participants the UofA Guest WIFI will be accessible, and passwords will be available on arrival. Please find the link for the UoA wireless that explains how guest and eduroam members can access the UoA wireless network - <https://www.adelaide.edu.au/technology/your-services/network-services>.

Roseworthy Campus Security

24-hour security is provided on campus. Contact Roseworthy Security T 8313 7999, located in the Security and Campus Services building.

Health and Safety

Emergency:

In an emergency call 000 for ambulance, fire or police. For non-emergency police assistance call 131 444.

Hospitals:

Gawler Health Service open 24 hours, 7 days a week is about a 15min drive from Roseworthy Campus and provides an accident and emergency service along with a comprehensive range of medical and surgical services to patients

24-Hour Accident and Emergency:

- Gawler Hospital
 - ADDRESS: 21 Hutchinson Road Gawler East SA 5118
 - PHONE: 8521 2000

- Lyell McEwin Hospital (city)
 - ADDRESS: Haydown Road, Elizabeth Vale
 - PHONE: 8182 9000

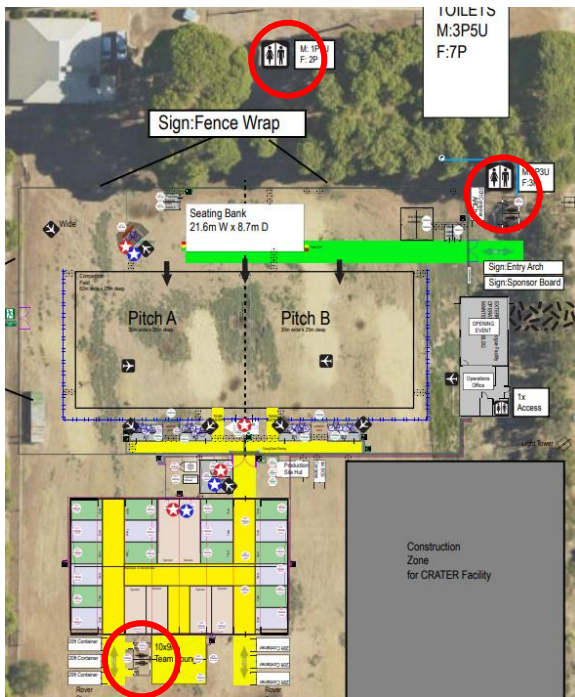
- Royal Adelaide Hospital (city)
 - ADDRESS: Port Road, Adelaide
 - PHONE: 7074 7000

24-Hour Pharmacy – Midnight Pharmacy:

- ADDRESS: 192 Wakefield Street, Adelaide
- PHONE: 8232 4445

Toilets:

There are various toilets located around the competition site, refer to the red circles on the map below. There are also toilets located in the Maitidli Café.



Key Contacts

CONTACT	PHONE NUMBER
Roseworthy Campus Security	8313 7999
Emergency Call (ambulance, fire or police)	000
Non-emergency police assistance	131 444

Adelaide & Barossa Valley, South Australia

Adelaide, the capital city of South Australia, ranks among the world's most liveable cities. It's a vibrant and charming destination that offers a unique blend of natural beauty, cultural experiences, and a relaxed lifestyle. Additionally, it is home to the Australian Space Agency.

Want to know more about Adelaide & Barossa Valley? Check out the [Welcome Guide!](#)

For more information on South Australia, see the [South Australian Tourism Commission](#) and [Experience Adelaide](#).